

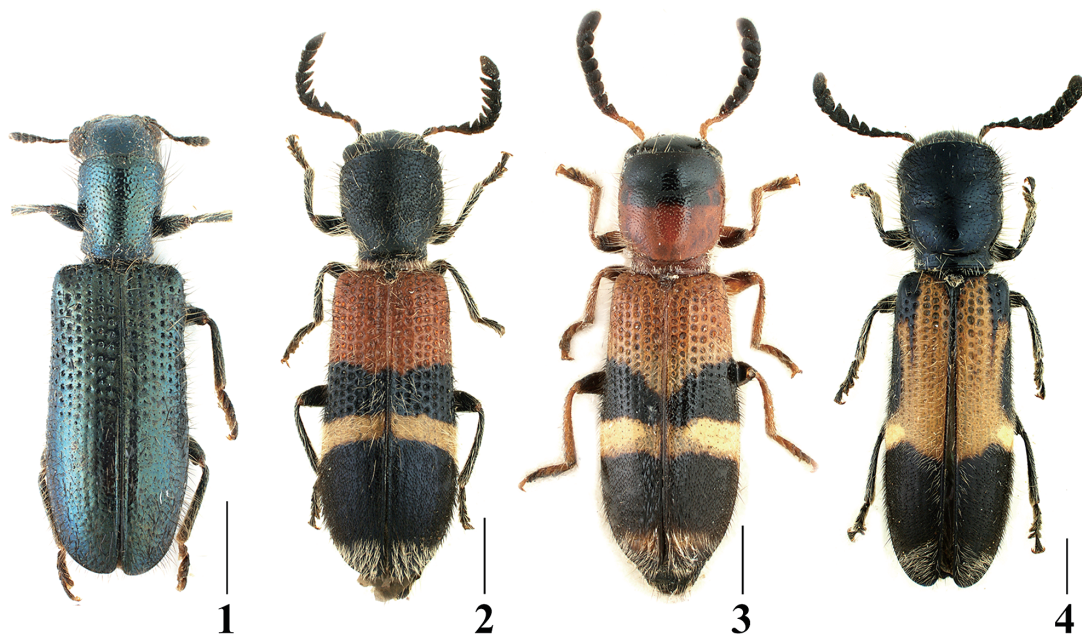
New Records of Two Species of the Subfamily Tillinae from Taiwan (Coleoptera, Cleridae)

Hiroyuki MURAKAMI

Entomological Laboratory, Faculty of Agriculture, Ehime University,
3–5–7 Tarumi, Matsuyama, 790–8566 Japan
E-mail: hiroyuki068@gmail.com

The subfamily Tillinae LEACH, 1815 contains about 60 species under 20 genera distributed in the Palaearctic and Oriental Regions (LÖBL *et al.*, 2007; MELNIK, 2009; GERSTMEIER, 2015; MURAKAMI, 2016). Of those, 20 species under seven genera, *Cladiscus* CHEVROLAT, 1843, *Cylidrus* LATREILLE, 1829, *Diplopherusa* HELLER, 1922, *Gastrocentrum* GORHAM, 1876, *Paracladiscus* MIYATAKE, 1965, *Tilloidea* LAPORTE, 1832, and *Tillus* OLIVIER, 1790, had been known from Taiwan. Recently, I examined some materials deposited in EUMJ (Ehime University Museum, Matsuyama, Japan) and NHMI (Natural History Museum and Institute, Chiba, Japan), and found two unrecorded species, *Spinoza coerulea* LEWIS, 1892 and *Tilloidea unifasciata* (FABRICIUS, 1787), from Taiwan. In this paper, I newly record them and give a key to the Taiwanese species of the genus *Tilloidea*.

I would like to thank to Mutsuo MIYATAKE and Kazuhiko KONISHI (EUMJ) for their helpful supports, and Hiroyuki YOSHITOMI (EUMJ) for his critical reading of the manuscript. I also thank to Aki-ko SAITO (NHMI), Shozo OSAWA (Hiroshima, Japan), and Katsumi AKITA (Mie, Japan) for loan of the



Figs. 1–4. Habitus. — 1, *Spinoza coerulea*; 2, *Tilloidea unifasciata*; 3, *T. notata*; 4, *T. birmanica*. Scale bars: 1.0 mm.

specimens preserved in NHMI.

Spinoza coerulea LEWIS, 1892

(Fig. 1)

Specimen examined. Taiwan: [Kaohsiung] 1 ex. (EUMJ), Taoyuan District, Tien Chi, alt. 2,200 m, 2.V.1986, K. BABA leg.

Distribution. Japan, Taiwan (new record).

Tilloidea unifasciata (FABRICIUS, 1787)

(Fig. 2)

Specimens examined. Taiwan: [Kaohsiung] 1 ♀ (EUMJ), Liukuei Township, 10.IV.1986, K. BABA leg.; 1 ♂ (NHMI), same locality, 24.IV.1987, C. W. CHEN leg.; 1 ♀ (NHMI), same locality, 1. IV.1990, C. W. CHEN leg. [Nantou] 1 ex. (EUMJ), Nanshanshi, Renai Township, 24–26.III.1977, Y. NOTSU leg.

Distribution. Europe, North Africa, Iran, Turkey, India, Taiwan (new record).

Tilloidea notata (KLUG, 1842)

(Fig. 3)

Specimens examined. Taiwan: [Kaohsiung] 1 ex. (NHMI), Liukuei Township, 13.VI.1990, C. W. CHEN leg.; 1 ex. (EUMJ), same locality, 2.V.1986, K. BABA leg. [Pingtung] 2 exs. (EUMJ), Hengchum Township, 5.VIII.1966, H. KAMIYA leg. [Nantou] 1 ex. (EUMJ), Nanshanshi, Renai Township, 8.V.1965, T. SHIRÔZU leg.; 1 ex. (EUMJ), same locality, 13.V.1983, M. HASEGAWA leg.

Distribution. Japan, Taiwan, Madagascar, Guam, and widely in the Oriental Regions.

Tilloidea birmanica (GORHAM, 1892)

(Fig. 4)

Specimens examined. Taiwan: [Kaohsiung] 2 exs. (EUMJ), Maolin Township, 11.VI.1986, K. BABA leg.; 2 exs. (EUMJ), Liukuei Township, 3.X.1970, Y. KIYOYAMA leg. [Nantou] 1 ex. (EUMJ), Puli Township, 15–22.V.1965, Native collector.

Distribution. Taiwan, China, Indonesia, India, Myanmar, Laos, Malaysia.

Key to the Species of the Genus *Tilloidea* from Taiwan

1. Elytra yellowish white largely in basal 3/5. *Tilloidea birmanica* (GORHAM, 1892) (Fig. 4)
- Elytra red in basal 1/3. 2
2. Pronotum partly or wholly reddish brown, finely punctured. Basal reddish elytral markings extended apically. Legs reddish brown except for black post femora. *Tilloidea notata* (KLUG, 1842) (Fig. 3)
- Pronotum wholly black, coarsely punctured. Basal reddish elytral markings not extended apically. Legs black. *Tilloidea unifasciata* (FABRICIUS, 1787) (Fig. 2)

References

- GERSTMEIER, R., 2015. Two new species of Tillinae from the Himalaya (Insecta: Coleoptera: Cleridae). Pp. 445–450. In HARTMANN, M., & J. WEIPERT (eds.), *Biodiversität und Naturlausstattung im Himalaya*, **5**. 580 pp. Verein der Freunde und Förderer des Naturkundemuseums Erfurt e.V., Erfurt.
- LÖBL, I., J. ROLČÍK, J. KOLIBÁČ & R. GERSTMEIER, 2007. Cleridae. Pp. 367–384. In LÖBL, I., & A. SMETANA (eds.), *Catalogue of Palearctic Coleoptera*, **4**. 935 pp. Apollo Books, Stenstrup, Denmark.
- MELNIK, I. V., 2009. New and little-known species of checkered-beetles (Coleoptera, Cleridae, Thanerocleridae) from Russian Far East. *Russian entomological Journal*, **18** (1): 63–72. (In Russian, with English summary.)
- MURAKAMI, H., 2016. Review of the genera *Diplopherusa* and *Paracladiscus* (Coleoptera: Cleridae: Tillinae) from Japan and Taiwan, with descriptions of two new species. *Acta entomologica Musei Nationalis Pragae*, **56** (2): 725–741.

Manuscript received 18 February 2018;
revised and accepted 27 February 2018.